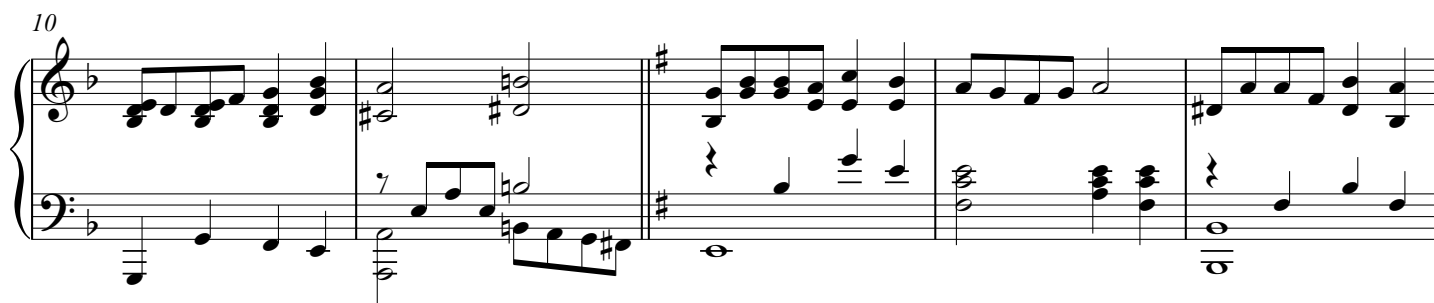


Piano

Есть на небе Книга!

сл. и муз. Воробьев С.



20

Measures 20-22 of a piano piece. The music is in G major (one sharp). The right hand features a continuous eighth-note melody. The left hand provides harmonic support with chords and single notes, including some grace notes.

23

Measures 23-25 of a piano piece. The right hand continues with an eighth-note melody. The left hand features a steady eighth-note bass line in measures 23 and 24, followed by chords in measure 25.

26

Measures 26-28 of a piano piece. Measure 26 continues the previous texture. Measures 27 and 28 show a change in the left hand's bass line, with a new rhythmic pattern of eighth notes.

29

Measures 29-32 of a piano piece. The right hand features a more complex melody with sixteenth-note runs. The left hand continues with a steady eighth-note bass line. The piece concludes with a double bar line and repeat dots in measure 32.

32

Measures 32-35 of a piano piece. The key signature has one flat (B-flat). The melody in the right hand consists of eighth and quarter notes, while the left hand provides a bass line with some chords. Measure 33 features a whole rest in the right hand and a half note in the left. Measure 34 has a whole rest in the right hand and a half note in the left. Measure 35 has a whole rest in the right hand and a half note in the left.

36

Measures 36-39 of a piano piece. The key signature changes to two sharps (F# and C#). The melody in the right hand continues with eighth and quarter notes. Measure 37 has a whole rest in the right hand and a half note in the left. Measure 38 has a whole rest in the right hand and a half note in the left. Measure 39 has a whole rest in the right hand and a half note in the left.

40

Measures 40-43 of a piano piece. The key signature remains two sharps (F# and C#). The melody in the right hand continues with eighth and quarter notes. Measure 41 has a whole rest in the right hand and a half note in the left. Measure 42 has a whole rest in the right hand and a half note in the left. Measure 43 has a whole rest in the right hand and a half note in the left.

44

Measures 44-47 of a piano piece. The key signature remains two sharps (F# and C#). The melody in the right hand continues with eighth and quarter notes. Measure 45 has a whole rest in the right hand and a half note in the left. Measure 46 has a whole rest in the right hand and a half note in the left. Measure 47 has a whole rest in the right hand and a half note in the left.